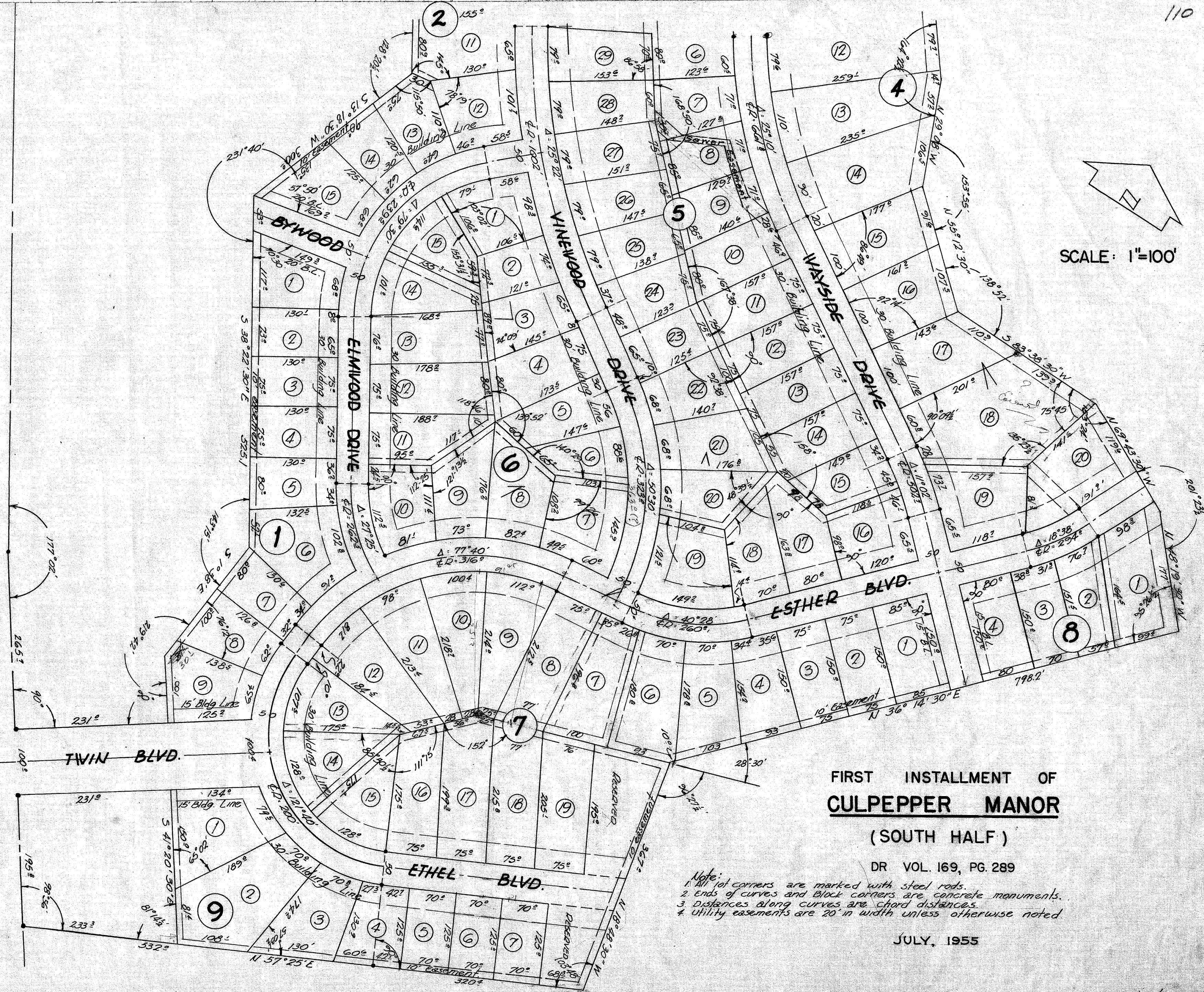


STATE HWY. NO. 6 (TEXAS AVE.)



SCALE: 1"=100'

FIRST INSTALLMENT OF  
**CULPEPPER MANOR**  
 (SOUTH HALF)

DR VOL. 169, PG. 289

JULY, 1955

- Note:
1. All lot corners are marked with steel rods.
  2. Ends of curves and block corners are concrete monuments.
  3. Distances along curves are chord distances.
  4. Utility easements are 20' in width unless otherwise noted.